

Bipolar disorders

CHI Formulary Treatment algorithm

Treatment algorithm- October 2023

Supporting treatment algorithms
for the clinical management of
bipolar disorders

Figure 1 outlines a comprehensive treatment algorithm on **the management of Bipolar disorders** aimed at addressing the different lines of treatment after thorough review of medical and economic evidence by CHI committees.

For further evidence, please refer to CHI **Bipolar disorders** full report. You can stay updated on the upcoming changes to our formulary by visiting our website at <https://chi.gov.sa/AboutCCHI/CCHIprograms/Pages/IDF.aspx>

Our treatment algorithm offers a robust framework for enhancing patient care and optimizing treatment outcomes across a range of treatment options, holding great promise for improving healthcare delivery.

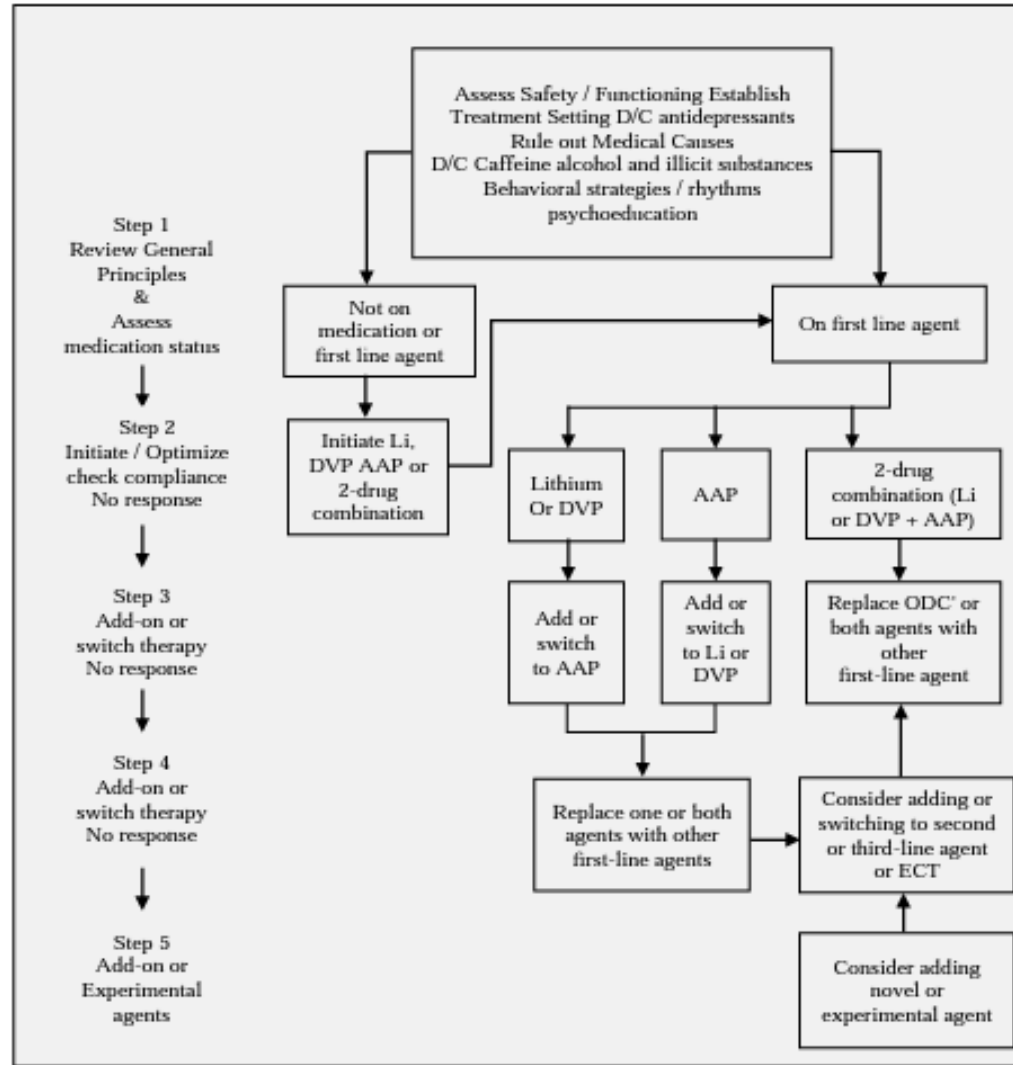


Figure 1: Treatment algorithm for the management of Bipolar disorders